

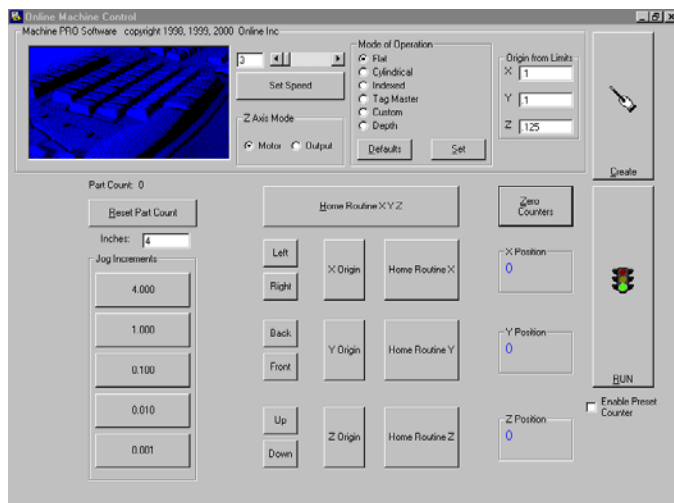
# SABRE Benchtop Routing & Depaneling System

## SMART PCB PROCESSING!

The Sabre is designed and manufactured by Online Inc. to be the best choice in benchtop engraving, routing and depaneling applications. The rigid construction and machine tool quality components provide the accuracy and repeatability required to meet and exceed any manufacturing application. The system features pre-loaded lead screws and ball slides with brushless motors, all tuned for high speed production; ideal for circuit board routing/depaneling, drilling composites and plastics and micro-machining. The head features a brushless high-speed spindle with closed-loop digital control and optional tool changing pneumatic collet system. The Sabre is ideal for production manufacturing as well as the R&D prototype lab.



*Reworking circuit boards with the SABRE 1212. Shown with optional TC-100 ten position tool changer with opto-length sensor and fully automated vision system with red LED light. All with quick disconnect components for easy service and access.*



*Simply the finest software and machine control functions featuring powerful machining capability with true ease of operation.*

## THE OPERATOR'S CHOICE!

The powerful Engravelab software package will allow file imports from your favorite CAD program, in dozens of file formats such as HPGL, DXF, etc. Full control of tool path, offsets and color programmed by depth is included as standard features. Fill routines and pockets are a snap with the onboard editor and tool path viewer. In addition, the Online Inc. MachinePro software is supplied for quick and easy jogging, origin setting and file management functions. With the most powerful software package, the Sabre is customizable with features such as automatic tool changer, automated vision system and miscellaneous parts handling peripheral components.