

SL-3020 Laser Production Center

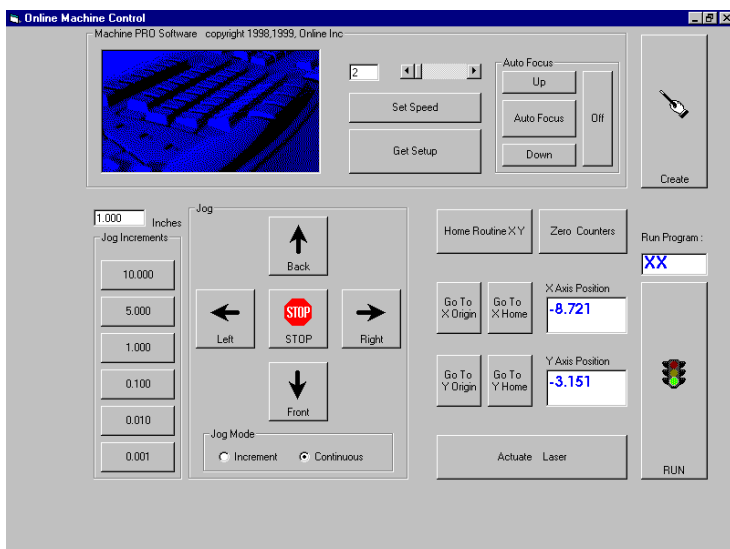
CUT AND MARK YOUR PRODUCTS WITH A BEAM OF LIGHT!

Part of the Smart Line Series, the SL-3020 is designed to streamline your production with an easy to operate laser engraving/cutting system, that simply direct a focused beam of light to process your products without the need for messy inks, expensive dies, or hazardous solvents. This non-contact method means even thin, delicate parts can be cut without drag or tearing. Even at high speeds!

The generous 30" x 20" x 12" work area accommodates a large size range of parts. A built-in auto focus feature automatically sets the laser beam distance with just the click of a button. Retooling now means just loading a different file. *It really is that simple!*



Use one machine to serialize, bar code, scribe, trim, cut, perforate, groove, drill, mark and more!



Designed for today's most demanding industrial production needs, the SL-3020 will mark your product using no messy inks, expensive foils or consumables!

EASE OF OPERATION . . .

The SL-3020 features operates in the familiar Win95/Win98 environment with a rich list of features including the ability to import more than 40 different file formats. Serializing and bar coding are included for smart product identification, while a DXF converting feature offers true CAD/CAM operation.

If you can print with your computer system, you can operate the SL-3020. *It really is that simple!*