

# SL-4848 Nd:YAG / CO<sub>2</sub> Combo Laser

## Quick and Easy to Operate!

The SL-4848 Combo Laser is the first production system incorporating both CO<sub>2</sub> and Nd:YAG format lasers. This gives you unparalleled versatility in cutting and marking virtually any material. These systems are built on our world class SL Series platform, that boasts high performance, ease of operation and uncluttered material handling capabilities.

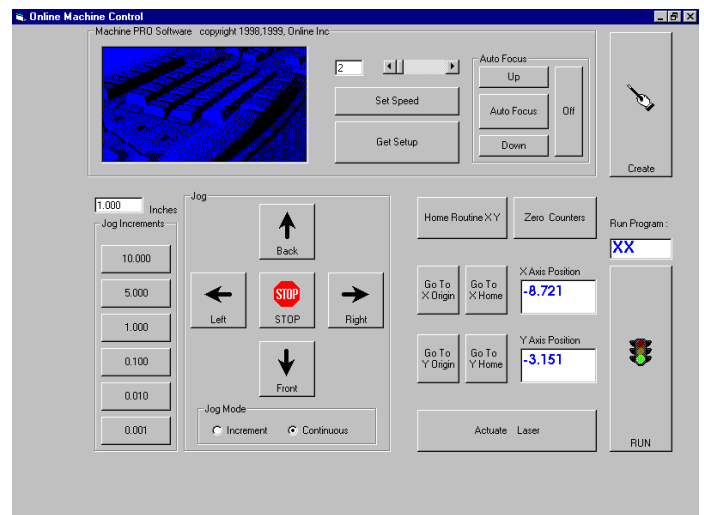
Along with the integrated CNC-type control, the system features a simple property window which will allow you to set speeds, laser power, gas assist (if required) and offsets for quick changeover when running different types of material. The entire 48" x 48" table is elevated with four lead screws and 1.500" diameter hardened shafting for stable, precise control and automatic focus adjustment.



*The SL-4848 features machine-tool quality construction including hardened ground rails, brushless programmable motors, all mounted on a rigid box frame construction and fastened to a heavy-duty tubular steel welded base.*



*The automated sloped front opening provides the ideal access for loading materials from front or top. The integrated vacuum/fume extraction table is equipped with four individual shut-off valves for disabling any combination of sections when not required.*



*The embedded control system requires no PC for programming or operation. Additional inputs/outputs are included for controlling peripheral equipment such as conveyors, rotary dials, etc., without the use of an external PLC.*