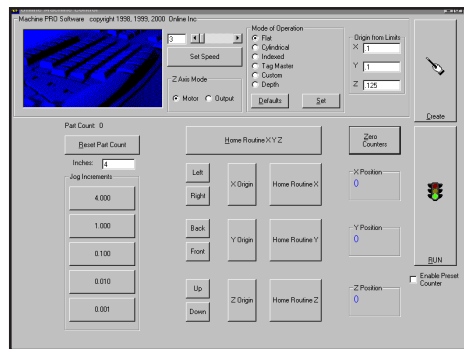
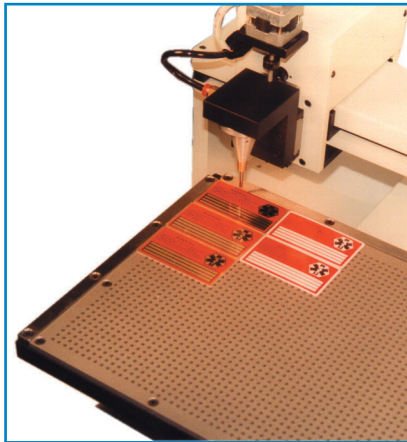
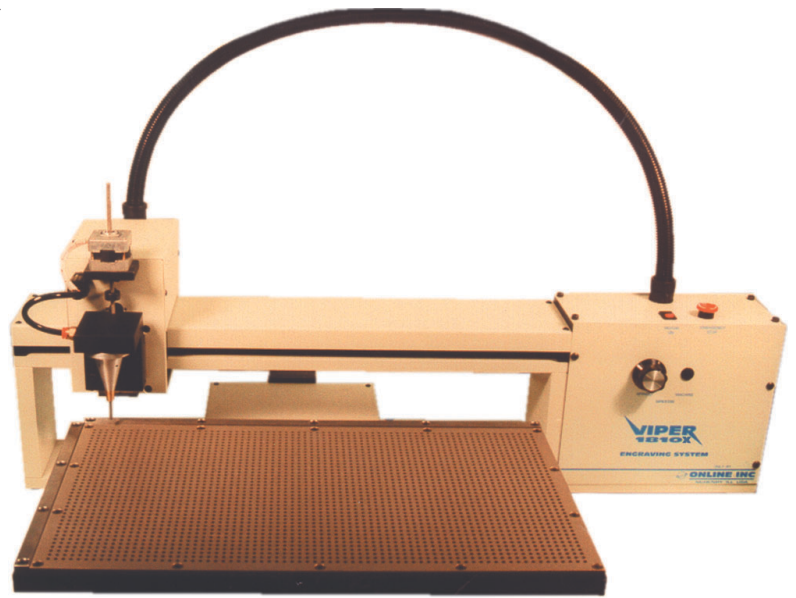


# VIPER 1810X Impact Engraving System

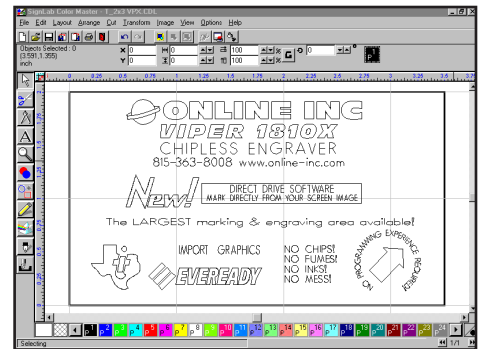
The **VIPER 1810X** leads the industry by providing a generous 18" x 10" work area in a truly space saving package. A cost effective alternative for marking projects that require a larger marking area than standard impact markers can provide. A high speed carbide marking pin permanently engraves and marks a wide variety of materials from plastics to hardened tool steels - perfect for large pieces or fill the board with smaller pieces to increase production rates.

Unique in design, the **VIPER 1810X** lets you mark plates of various sizes, controlling the z-axis by color so you can process many tags at once.

Each system is equipped with easy to operate, powerful engraving/graphics software - all in a Windows98 format so no programming is required! The full featured software allows you to date code, serialize, create unlimited graphics and so much more!



*Our MachinePro software provides control for jogging, setting origins and modes of operation on your machine.*



*Directly type in text and import graphics from dozens of file formats in a familiar Windows98 environment.*

## SCAN YOUR PARTS TO USE AS A TEMPLATE!

Simply scan your part directly into the software then just type or add logos directly over the image for a perfect, true to scale template requiring no fussy measurements or layout work!

